

Central Coast Tour

November 6-7, 2019

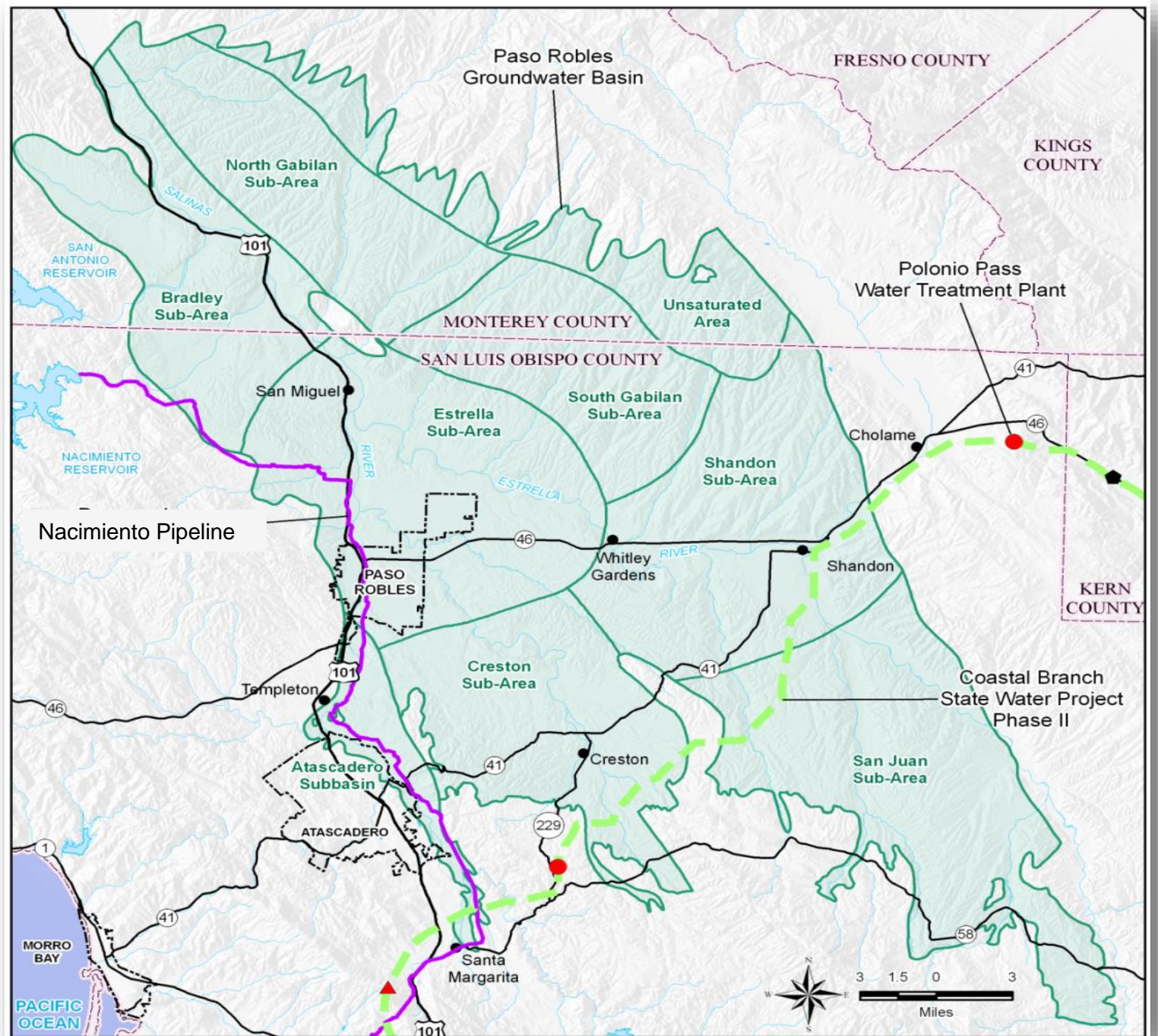


Paso Robles Basin

Framework, History, and
Current Sustainability Efforts



- ✓ Initial DWR B-118 boundary
- ✓ Modified by Fugro (2002; excluded eastern area)
- ✓ Modified by Fugro/GSI (2016) BBMR to exclude Atascadero Basin
- ✓ Modified in 2018 BBMR to exclude Monterey County

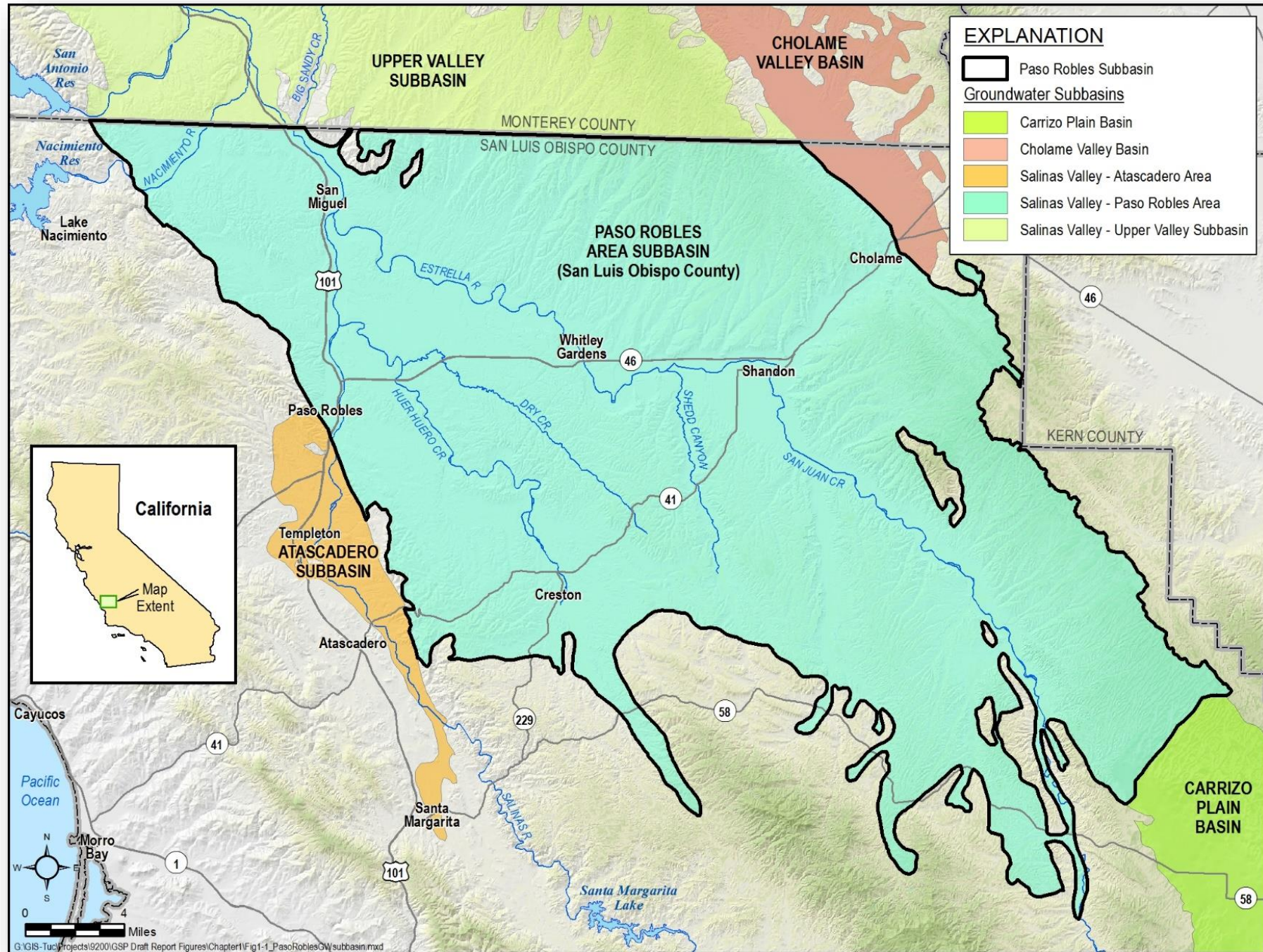


✓ 450,000 acres

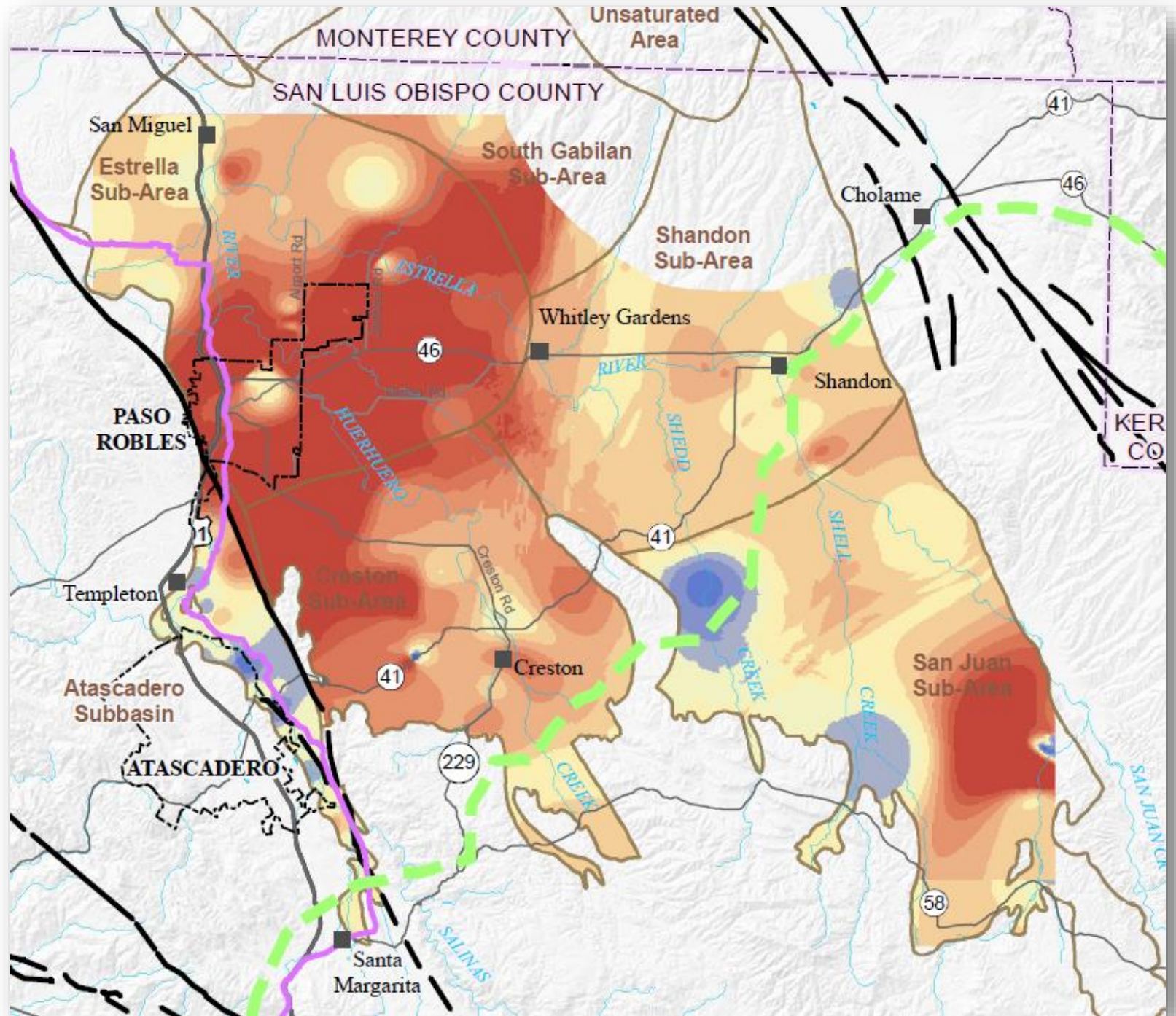
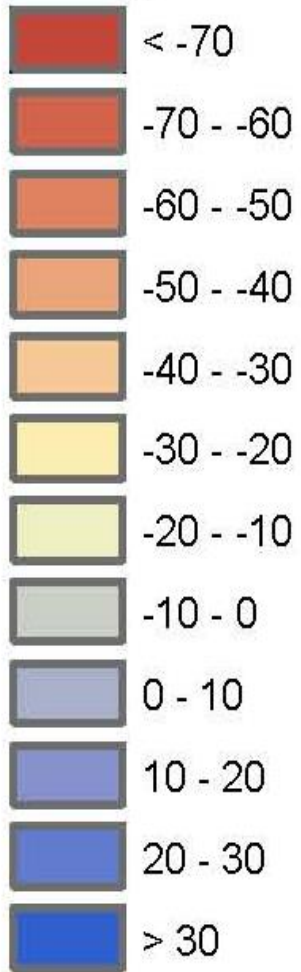
✓ 680 sq miles

✓ Max depth –
2,500 ft

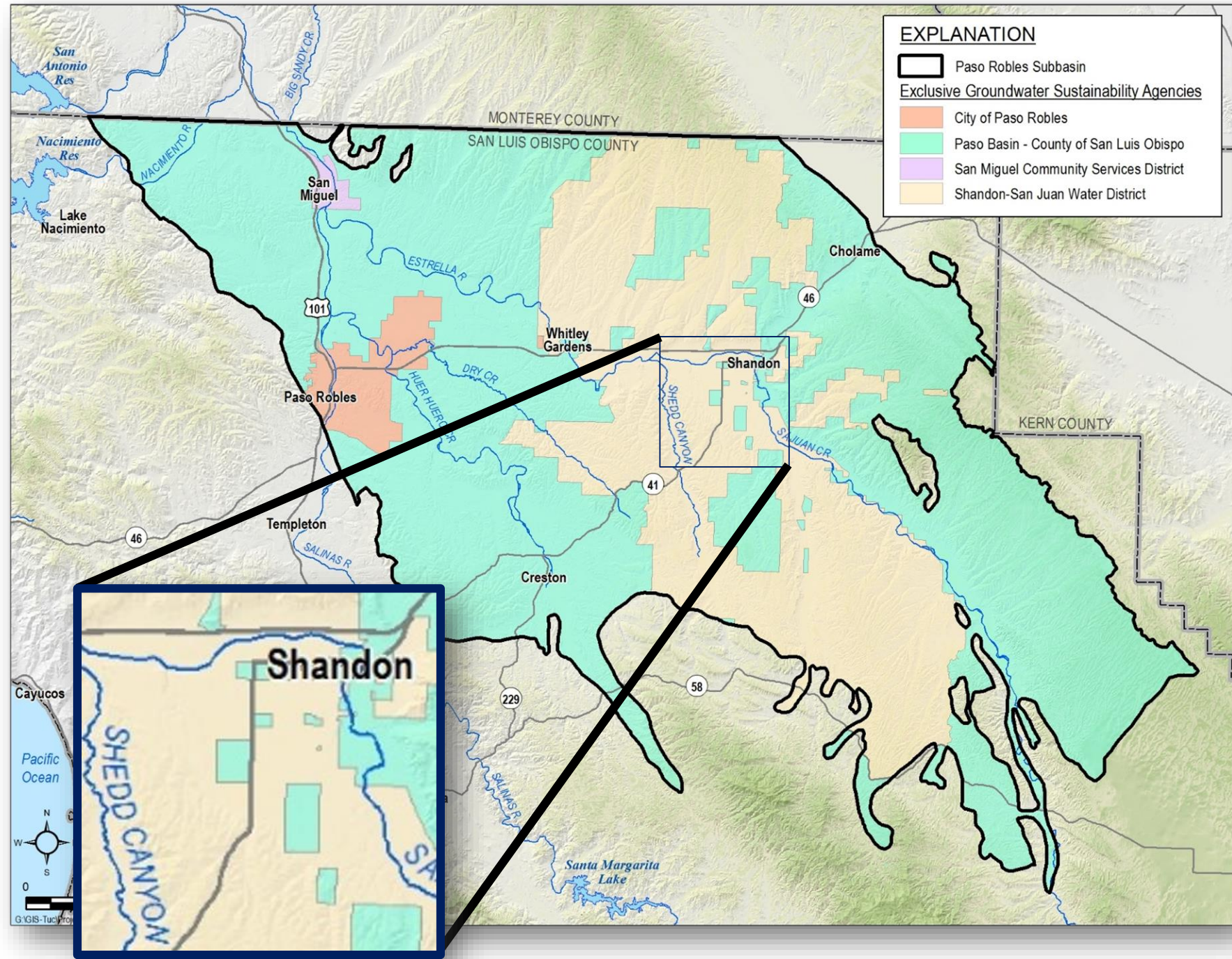
✓ Avg depth –
500-800 ft



Change in Groundwater Elevation



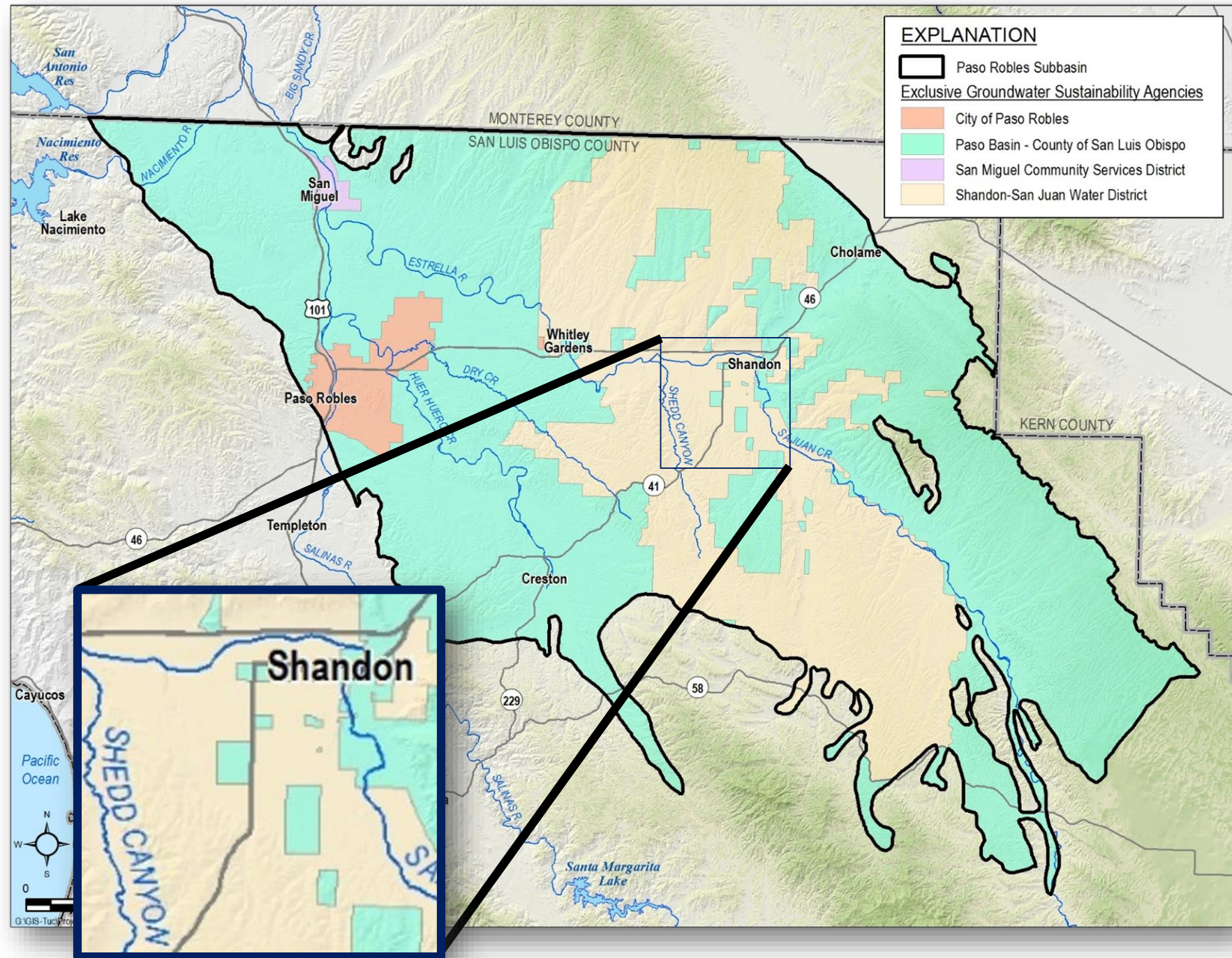
✓ Four GSAs
✓ One GSP



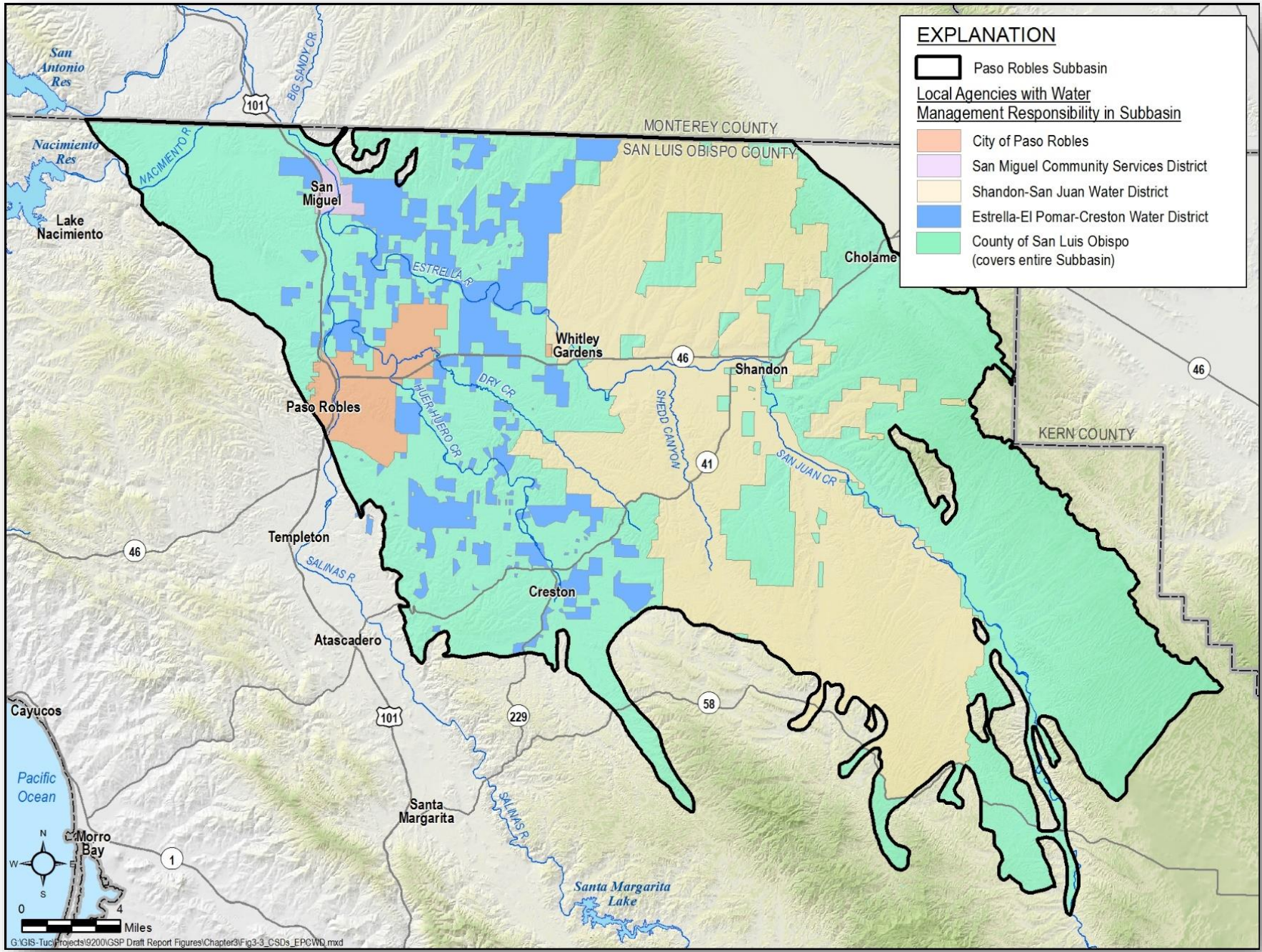
✓ Four GSAs

- ✓ County of SLO – 62%
- ✓ Shandon-San Juan WD – 20%
- ✓ City of Paso Robles – 15%
- ✓ San Miguel CSD – 3%

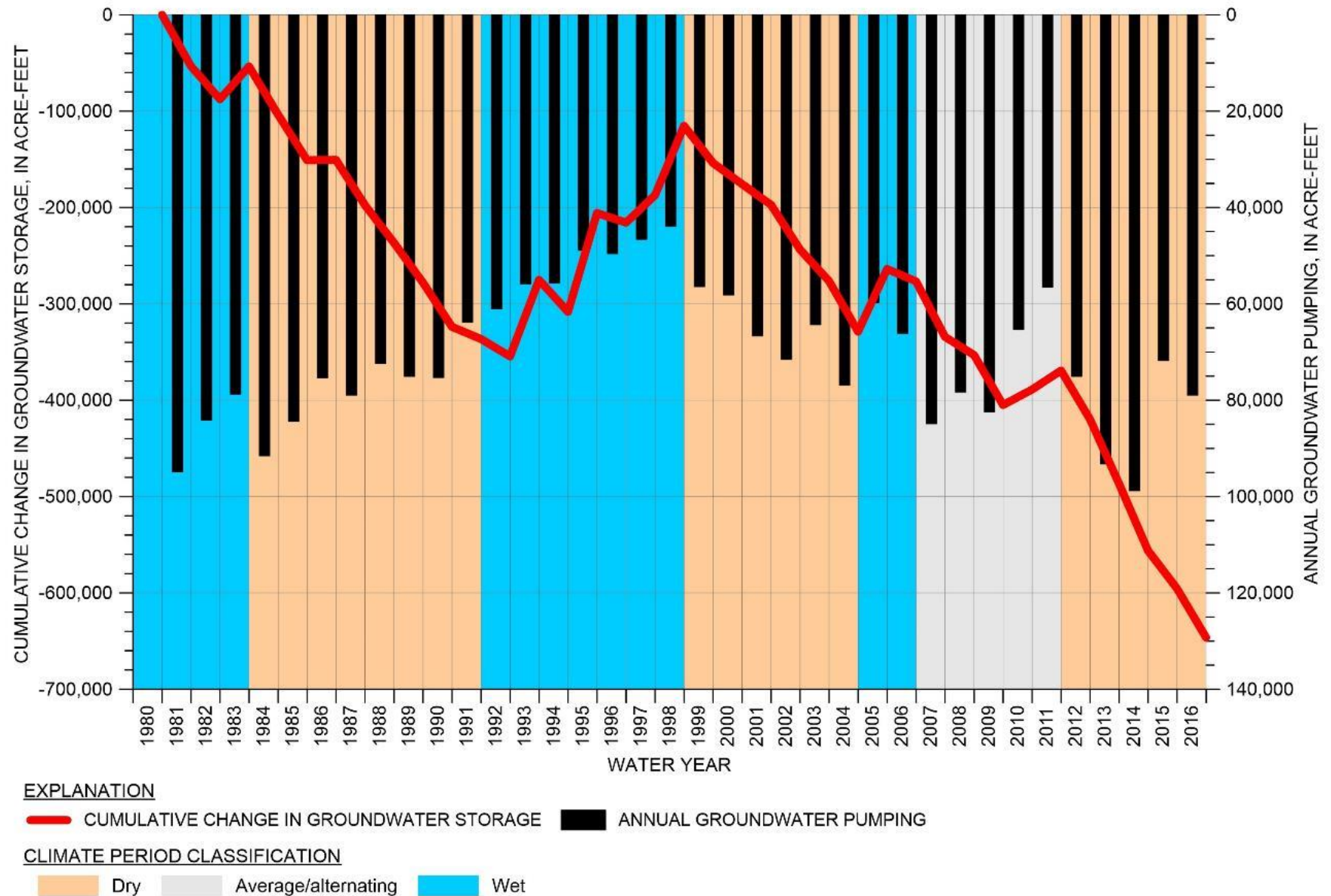
✓ One GSP



✓ EPC Water District... not a GSA



- ✓ Safe Yield – 61,100 AFY
- ✓ Projected Pumping – 74,800 AFY
 - Ag – 90%
 - M&I – 6%
 - Rural – 4%
- ✓ Projected Deficit – 13,700 AFY
- ✓ Historic Loss of Groundwater in Storage – 12,000 AFY



Plan to Sustainability

- Goal – achieve sustainability through management actions
 - Voluntary land fallowing
 - Best management practices
 - Outreach and education
 - Pumping limitations
- No forced actions – yet
- “Willing Entities” can implement projects, but no GSA is bound to project costs



Potential Projects

- Recycled water from City of Paso Robles
 - 2,900 – 5,000 AFY
 - Requires regional cooperation
 - Requires blending with Nacimiento Water
- Nacimiento Water
 - Perhaps up to 5,000 AFY
 - Not likely permanent source
- State Water Project
 - Perhaps 8,000 AFY
 - Multiple constraints (treated, pipeline capacity, costs)



Final GSP – Approved (?)

- Requires approval by all 4 GSAs
- Disparate interests, and ideas on solutions
- Significant issues yet to be resolved
 - Difficult negotiations
 - Governance going forward
 - Plan to plan



Questions?



✓ Safe Yield –
61,100 AFY

✓ Projected
Pumping –
74,800 AFY

✓ Ag – 90%

✓ M&I – 6%

✓ Rural – 4%

✓ Projected Deficit
– 13,700 AFY

